

DASH GROUP INC.

Aviation Software

***Maintenance, Inventory
And
Purchasing
Solutions for PC Environment***

Affordable Aviation Software Solutions



Introduction

Dash Group Inc. has been providing computer software solutions and services to the aviation industry for over 20 years. Since incorporation in 1982, we have been providing the industry with quality products that covers the entire end-to-end business process. The Aircraft Maintenance Management solution includes:

- Maintenance Planning
- Reliability
- Technical Records
- Quality Assurance
- Inventory (consumable and rotatable) Management
- Purchasing

The DASH family of aviation software utilizes the latest in client/server database systems and can be implemented with Windows 9x or Windows NT operating systems. Our programs take advantage of the latest in personal computer technologies to provide each user with a system that maximizes user efficiency in the Windows based environments in use today.

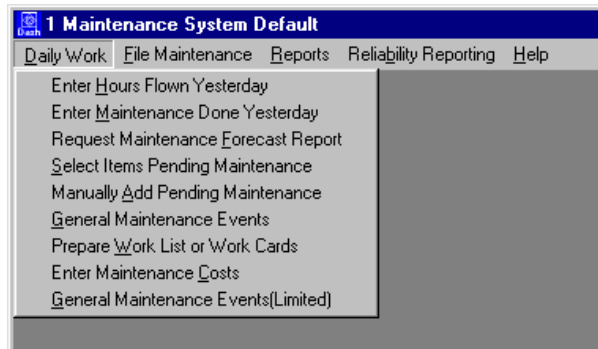


Figure 1 – Maintenance Module Menu Sample

The user-friendly screen formats enable the user to gain maximum benefits with minimal amounts of input



Form: Enter Maintenance Done for Acft: N214 Press F2 to back out

Maintenance Date Was job completed (Y/N) N

Part number 737-3 Serial number N214

Maintenance Code R CK Operation (Sequence)
R CHECK G.M.Reference#

Reset Hours, Cycles, Days and Months to 0 (Y/N) Y Work Order# N214

Reset TSI and CSI on original part to 0 (Y/N) N Work Hours 0.0

History entry (Y/N) Y History comments (Y/N) N Scheduled (Y/N) Y

----- Fill in below only if part movement. -----
Enter 1)Replacement 2)Removal Only 3)Install Only 4)Swap Parts 0

Original part: Inv.Location Install On: Plane
(1 _2) Status (R/U) (3) Loc.

Replacement part: Part number
(1 _4) Serial number

Reset TSI and CSI on replacement,install, or swap (Y/N) N

OK CANCEL

Figure 2 – Enter Maintenance Data Screen

The DASH Group software has always been provided as cost and resource effective solution; hence maintaining reasonable operating costs for the carrier. The costs of our initial software package and annual support agreement are among the lowest in the industry. Our goal is to provide carriers with a reliable method of operation that allows for increased productivity and improved processes while realizing the benefits of reduced operating costs. The DASH programs are fully interfaced to each other, optimizing point of entry data entry. DASH Program modules are also capable of automatically loading financial information into your finance programs.

Our initial software packages are available as a complete system or as modular units. The annual support agreement, in addition to licensing of the software, includes all improvements and system upgrades in addition to direct access to program support staff.



Support Services

Dash Group Inc. support services are available for our current clients as part of our annual licensing and support agreement. Our friendly and efficient staff is prompt to assist clients with applications, answer any questions and provides a dependable support resource. Support staff can be contacted by e-mail, phone (both direct dial and toll free service) or fax

The DASH Group Inc. also provides customized programming services for clients that have specific or unique requirements. Custom programming costs are based on a very reasonable time and materials rate. Our programmers will assist in the design, development, training and implementation of custom programming requirements.

Client Base

The DASH Group Inc. family of software is in use at Airlines and Air Service Operators around the world. DASH Group Inc. software solutions are designed to operate in any aviation related environment. Our client base includes operators of both fixed wing and helicopters:

- Corporate operations
- Private operators
- Commercial operators

Some of our clients use the DASH Group Inc. software products with as few as one aircraft while other clients operate over 200 aircraft with the same software package. No carrier is too big or too small to realize the benefits of using the DASH family of software solutions.



Maintenance Application

The DASH Maintenance application has been designed as a comprehensive tool used to track serialized parts owned by an airline. Parts are controlled by the system from the point of receipt through usage, transfers or repairs and finally being scrapped. The programs have been designed to process large volumes of data using a minimum amount of time and resources. Electronic data sources, such as scanners, can be used very effectively with the system.

The DASH Maintenance module requires basic data entry functions to track parts and produce comprehensive history and usage reports. Tracking and reporting is done automatically from daily operational tasks, such as entering daily times and cycles, maintenance accomplishments, squawks and engine trend readings. Costing of parts can be maintained as either average or actual (user defined in the system settings).

All parts in the system track TSN (time since new), TSO (time since overhaul) and TSI (time since installed on an aircraft). There is no limit to the number of maintenance constraints that can be assigned and tracked on any given part. Additionally, parts are monitored by one of three status codes:

- | | | |
|---|-----------------------|---|
| → | A (Active, Available) | tracked by inventory location |
| → | U (Unavailable) | tracked by the repair order number or work order job number |
| → | P (on an Plane) | tracks both the aircraft and the location on the aircraft |

In addition to the comprehensive part history and usage reports, the DASH Maintenance application offers two types of extensive Reliability reporting, Component reliability and ATA/Aircraft type. Component reliability tracks the unscheduled removals and failures per thousand flight hours. ATA/Aircraft type monitors the number of squawks per thousand flight hours for each ATA and aircraft type combination. A variety of reports for each reliability type can be produced on an ad-hoc basis.

Aircraft modeling is a standard feature of our maintenance software application. This feature allows the user to define a model for each type of aircraft operated. When a new aircraft is received, the system will automatically build the aircraft with the serial numbers and times on the parts.

The newest addition to our Maintenance software is the electronic Part Request/Shipping Document system. The part request system was developed for electronic approval and tracking of required parts has been designed to work directly with Maintenance, Inventory and Purchasing applications. Requests automatically generate a “pick sheet” in the Inventory (Stores) department that is complete with stock location and quantity information. Stock “pick sheets” can also be separately produced to fill the order.



If the part is in stock it is either:

- Issued to the on-site requesting employee (i.e. hangar maintenance staff)
- A shipping document is produced (i.e. out-bases)

If the part is not in the system:

- Purchase request is generated.

Purchase requests are automatically generated with the original Part Request information.

The system monitors the user, date and time of all transactions from the original part request to issuance of the requested parts. This ensures part request and shipping document inquiries and reports will always show the most up to date status of the request.

In addition to many other features, the DASH Maintenance application has an employee-training module. The training module monitors and controls the training requirements and related history for the maintenance staff. As training requirements are met, the system automatically recalculates the next due date, thus allowing for a wide variety of reporting capabilities.

Maintenance Application key benefits and functional features:

- Provides interactive data entry with online field editing and audit trails.
- Updates all aircraft and part records with minimum operator input.
- Monitors maintenance requirements for all aircraft and rotatable parts, such as airworthiness directives, and service bulletins.
- Allows user to define aircraft types and maintenance programs including initial, repetitive, or terminating maintenance requirements based on hours, cycles, days, and/or months constraints.
- Forecasts manpower and maintenance requirements for requested future time periods.
- Incorporates a system to assure compliance of aircraft inspections and individual part maintenance.
- Produces work orders for use in scheduling daily work.
- Provides on-line inquiries for aircraft or rotatable parts. Some features include current status, times and history.
- Incorporates features and statistics normally associated with inventory and purchasing functions including the ability to store parts at any number of inventory locations.
- Distinguishes between scheduled and non-scheduled maintenance items.
- Analyses maintenance squawks to produce monthly alert levels for each ATA chapter, which are compared to standard levels for exception reporting.



Aircraft Modeling key benefits and functional features:

- Allows the user to define an unlimited number of aircraft or engine models.
- Simplifies the entry of new aircraft or engines into the maintenance system.
- Ensures that all aircraft and engines have standard scheduled maintenance items.
- Checks that all parts and maintenance requirements have been properly assigned to an aircraft or engine.
- Assists in control of AD and SB compliance by tracking applicability.
- Allows the user to compare an aircraft to a variety of models including a minimum equipment list.

Part Request key benefits and functional features:

- Automatically issues pick sheet or purchase request based on system availability of part requested
- On line approval (with user defined parameters) for requested parts
- Complete tracking of part requests and part movements
- System created audit trails showing complete history of request
- Integrates with Maintenance, Inventory and Purchasing applications thus ensuring accurate and up to date information
- Promotes Employee accountability
- Provides a variety of reporting capabilities

Shipping Document key benefits and functional features:

- Displays available stock locations and quantities for part number being shipped
- Allows changes and edits to the shipping document up to the time it is finalized
- Automatically moves parts being shipped to an inventory location of TRAN {Shipping Doc #}
- Upon receipt will set the part at the new location shelf/bin
- Audit trail shows complete history of request and shipping
- User defined parameters enable/disable various system attributes to suit each individual carrier needs
- Provides a variety of reporting capabilities



Key Component Tracking key benefits and functional features:

- Daily TBO can be tracked on user defined key component parts.
- Integrates with maintenance for removals and replacements.
- Integrates with the entry of times flown for automatic set up of the daily TBOs.
- Monthly aircraft summary showing all key components and daily times.

Employee Training key benefits and functional features:

- Monitors employee licenses and courses
- Complete history of training received
- Automatically calculates due dates
- Flexible system allows tracking of all employees (maintenance, pilots etc)
- Comprehensive reporting



Inventory Application

Aviation inventories are one of the major expenses that a carrier is faced with and one that can easily and unnecessarily escalate if not properly controlled. The DASH Inventory Control System is designed to closely control the inventory so that it is kept both minimal and adequate. By maintaining a minimal inventory and coordinating restocking with purchasing, the carrier can realize cost benefits by not overstocking items on hand.

The DASH Inventory Control System posts inventory transactions in an on-line environment, keeping the stock levels reported accurate and up-to-date. As daily transactions are processed in the inventory system, the stock status is immediately updated to reflect the correct inventory quantities and values. The DASH on-line environment can be interfaced with an outside financial program thus updating the general ledger as daily transactions are performed. By interfacing the DASH Inventory module to the financial programs, the ledger will reflect the accurate inventory value at any given time.

The Inventory module can also be configured to work in conjunction with the DASH Purchasing module, Part Request/Shipping Document module and the DASH Job Costing module. The Part Request Module interacts with the Inventory Model as an on line electronic part request system, monitoring part requisitions, purchase requisitions, issues etc. The Job Costing module interacts with inventory by posting inventory transactions to a WIP (work in progress) account until a job has been completed.

The DASH Inventory application values the consumable inventory as either FIFO (first in, first out) or LIFO (last in, first out), as defined by the user. All parts in the system can be set with a resale value for use with the part sales system. This standard feature for over the counter sales can be configured to automatically use the marked up sales price, thus insuring sold parts are properly priced. The sale of over the counter parts immediately relieves inventory and generates an invoice that can be automatically posted to a financial program Accounts Receivable and General Ledger.

Key benefits and functional features:

- Provides interactive data entry with online field editing and audit trails.
- Tracks inventory at multiple locations.
- Automatically averages cost upon receipt of purchased item.
- On-line part inquiry including information such as status and current cost.
- Provides for requisitioning of parts for jobs and for over-the-counter sales.
- Complete physical inventory section.
- Produces comprehensive reports on demand such as statistical analysis, detailed transactions and inventory value.
- Tracks loan/borrow activity.



Purchasing Application

The DASH Purchasing Application is used to prepare and control purchase orders issued by a carrier. The Purchasing application, when used in conjunction with the DASH Inventory, Maintenance and Part Request/Shipping Document modules, is a comprehensive tool used to coordinate timely purchases with carrier requirements.

A daily 'Buyer's Guide' report will provide purchasers with part and vendor information for stock items that are approaching reorder points. This report also shows a recommended purchase quantity that will restore the stock to its maximum level.

Purchase requests, generated by the Part Request system, are automatically received in the Purchasing application. These requests indicate item(s) required are not currently located in the stock, current stock levels cannot satisfy the requirement or the item required is a committed purchase for a specific work order. Electronic on line approval authorizes the purchase to be made.

Purchase orders are generated by the user and can be edited until the purchase order is finalized and sent. As items are ordered, the user can select specific due dates for delivery, assign part of the order as critical rush items, indicate shipping preference and attach messages on both the purchase order and each individual line item. Purchase orders can automatically be faxed from the system to the supplier or printed for manual processes. System generated purchase orders include company logos and layout as required by the carrier or can be formatted to print on current purchase order stock.

Purchase orders can be reviewed at any time with an on-line inquiry or one of the many comprehensive system reports. The inquiry and reports will show the status of the complete purchase order including any line items designated as critical rush items, open line items, line items that have already been received or partially received and overdue items.

One of the key features of the purchasing system is the ability to maintain vendor prices, lead times and discounts so that buying decisions reflect the best price as well as the time frame in which the parts will be received.

Receipt of parts automatically updates both the quantity and value of the inventory and can be configured to set up a payable in anticipation of the vendor invoice. Accurate prices at either the time the purchase order is issued or when it is received minimizes cost adjustments. The system will automatically flag purchase orders where there are discrepancies between the value ordered, received and the value invoiced.



Key benefits and functional features:

- Provides interactive data entry with online field editing and audit trails.
- Buyer's Guide purchase report for stock items approaching reorder points.
- Automatic purchase requests as generated by the Part Request system
- Allows complete purchase order maintenance including changes and deletions prior to the issuance of a purchase order.
- Permits access to inventoried parts by master part number as well as the vendor's current or previous number.
- Allow multiple vendors per part.
- Automatically displays vendor's current selling price and discount for the parts ordered.
- Automatically updates on-order status for inventoried parts.
- Automatically updates inventory and statistics at time of receipt of goods.
- Reprints partially received purchase orders upon request, showing current status of outstanding items.
- Reports a detailed transactional history of receipts.
- Allows on line inquiry to check the status of a purchase order.
- Automatically updates part request upon receipt of goods



Overview Application Interfacing

The Dash Group Inc. Maintenance, Inventory and Purchasing programs automatically interface with each other and are capable of loading financial information into your finance programs. As each transaction is processed, all modules in the MIPS system will update and the financial information can be exported into your finance programs. Our standard file format has interfaced with common finance applications such as ACCPAC and QSP.

Interfacing of data eliminates the need for duplication of data entry thus increasing accuracy in processing, saving time and resources to obtain up to date information in the DASH MIPS and external finance programs. Additionally, the program modules have industry standard interfaces for use with electronic information sources (such as scanners, industry information files – aircraft readiness, etc), eliminating the need for manual data entry processing while increasing accuracy in processing. Use of the DASH MIPS programs significantly reduces manpower requirements and processing expenses.

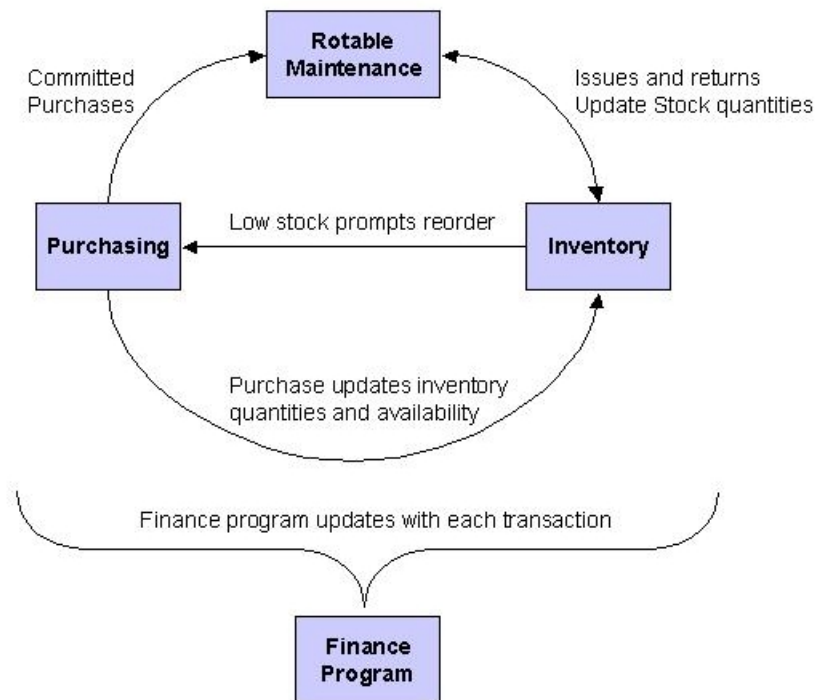


Figure 3 DASH MIPS Overview



Services Available

We are pleased to provide complete end-to-end Professional Services for our clients. The DASH Group's strategy of Process Optimization encompasses the complete range of Software Solutions, Application Service Provision and Professional Services.

Professional Services cover every aspect of project management, technical expertise and manpower needed to implement the DASH systems efficiently and effectively. Our services include but are not limited to:

- Project management
- Project development and scheduling
- Implementation services
- Software development
- Complete integration services
- Process improvements
- Analysis of staffing requirements
- Training of personnel

Our goal is to provide the necessary resources at the moment they are needed to ensure your business achieves the planned objectives in a time efficient manner at the lowest possible cost.

DASH Group Inc. professional services include a group of aviation consultants to provide a smooth transition from your existing software to our system solutions. Professional consulting can be custom tailored to individual requirements.



Contact Information

For further information on the DASH Group family of aviation software products, please contact our marketing and sales department.

Dash Group Inc.
1083 N. Collier Blvd. #345
Marco Island, Florida
USA
34145

Patricia Kerrigan
Vice President of Marketing and Sales

Telephone 415-602-5711
Fax 808-331-1058
E-mail patkdashca@aol.com
pat@dashgroup.com

800-670-1664 (United States only)
886-GET-DASH (886-438-3274)
941-642-1441 (outside of the US)
941-642-3687 (FAX)